

# Chance at the

## IDEAL HOME EXHIBITION

OVER 125 years of progress and achievement are gathered together in a nutshell (so to speak) by Chance Brothers at the Daily Mail Ideal Home Exhibition. The famous Crystal Palace was one of the most spectacular of these achievements. We made all the glass, nearly a million square feet of it, for the great Exhibition Building of 1851. This was a proud achievement because, not only was the glass produced at a very few months' notice, but its manufacture in no way interfered with normal production at the Glassworks. It was also made by a new process at that time.

Our Stand at this year's IDEAL HOME EXHIBITION is to be found in a model replica of the Crystal Palace. This model will form the central piece in the main body of the Grand Hall at Olympia.

The principal feature of the stand is glass for the home in the form of table glass in six family designs, both clear and coloured. Many of the patterns are already well known to the housewife. There are "Spiderweb", "Waverley", and "Britannia", all made by automatic machines to the designs of some of Britain's best industrial designers. New additions to the ranges in each pattern will be exhibited.

"Fiesta" is the very newest style of Chance Table glass. "Fiesta" has never been shown in this country before. It is made by a special process which enables the application to a clear or coloured base of intricate patterns and decoration.

Another important exhibit on this stand will be a modern rotating electric lighthouse optic and pedestal.

Chance Brothers exhibited the first British Lighthouse apparatus at the 1851 Exhibition, and this year, in 1951, celebrate their Centenary as Lighthouse Engineers. (They started making glass in 1824.)

There is also a token display of Chance glass for Science, comprising "Hysil" (Regd.) Laboratory glass and tubing and specialities such as the all glass interchangeable hypodermic syringe.

**Cathode Ray tubes for television and radar.** We made the very first of these for the Baird Experimental Station at the Crystal Palace.

**Optical and colour filter glass.**

**Glasses for eye protection for industrial uses.** Sir William Crookes turned to our firm to make the first experimental melts of the now famous Crookes glass.

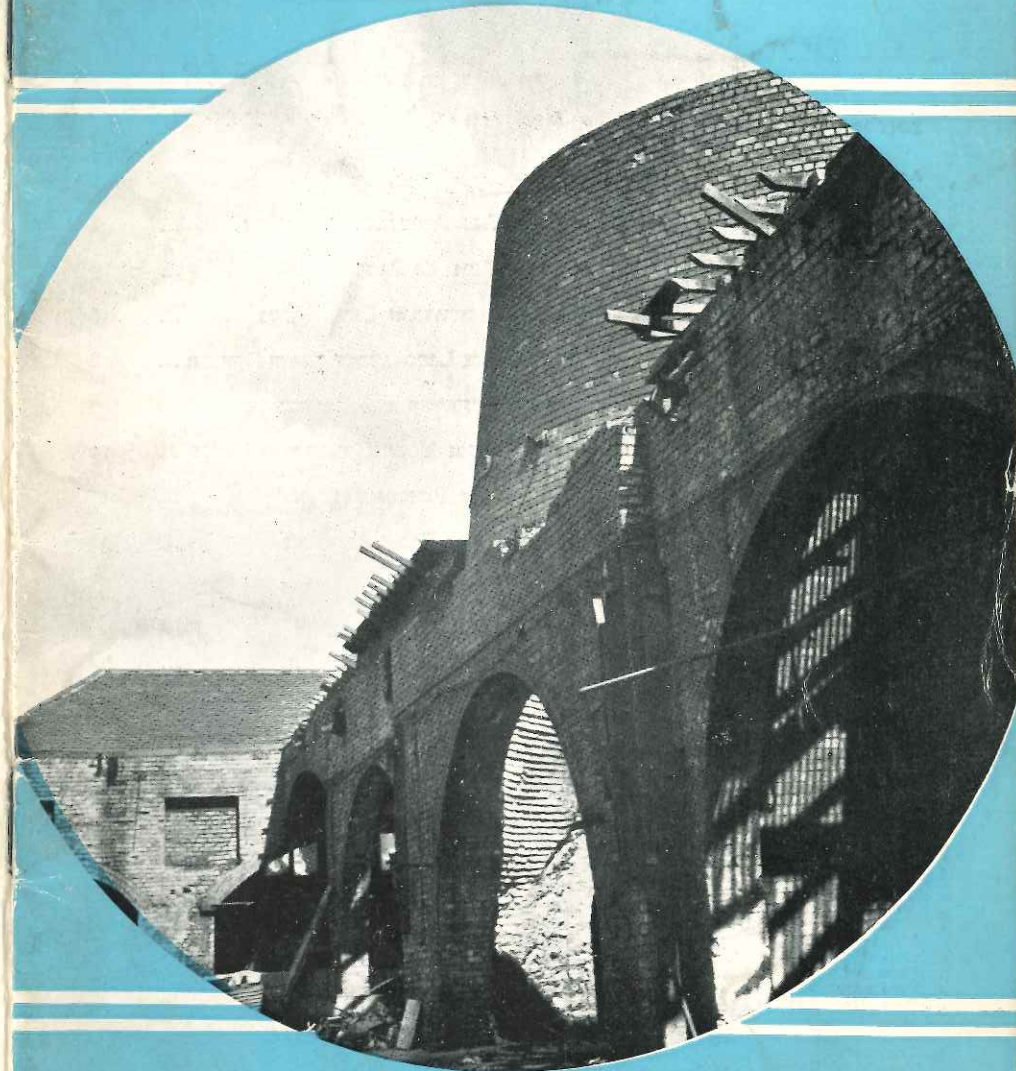
**Microscope cover slips and slides.** For more than a 100 YEARS now we have been the sole British makers of this extraordinarily thin scientific glass (200 pieces to the inch).

The Stand includes a display of glass used in lighting and signalling installations, tubing for fluorescent lamps, opal glass units, pressed lenses for ships' navigation lights and railway signals and car headlamp lenses.

Finally, specimens of modern building glass will include an entirely new decoration pattern designed especially for the Festival of Britain.

# Chance

## COMMENTS



MARCH—APRIL 1951

3<sup>D</sup>



# Chance

## COMMENTS

THE Magazine of Chance Brothers Limited, Smethwick published in alternate months for the interest, entertainment and information of all employees of the firm.

### Contents

EDITOR A. OGDEN

CORRESPONDENTS  
Accounts Office J. ALLEN

#### Blown and Pressed

Decorating	A. CHAMBERS
Inspection	F. O'CONNOR
Making	R. TURTON
Process	B. PATRICK
	S. STOCKIN
	F. TATTON
Sales	MISS L. RATLIDGE
Warehouse	MRS. A. KEYS
Buying & Stationery	MRS. CANTY
Costs	B. EVANS

#### Engineering

Drawing Office	S. DORAN
Electrical	D. PRICHARD
Grinding	MISS MUGLESTONE
Machine and	
Fitting	F. CARTWRIGHT
Commercial Staff	F. W. G. BEAUMONT
Stores	J. P. DEELEY
Sumo Office	R. P. WARD
Sumo Works	W. KINCHIN
Time Study	A. HEATH
Toolroom and	
Mould Shop	W. D. COX
Welding and	
Blacksmiths	D. EDWARDS
Works Staff	A. SLEIGH
Export	H. V. SKAN

#### Flat Glass

Making and	R. E. EVANS
Warehouse	S. RAY
Sales	A. FARDELL
Seven Storey	MRS. RUSSELL
Laboratory	

#### Maintenance and Construction

Boiler Shop	D. HILL
Building	S. BEARDSMORE
Electricians	E. A. WHITEHOUSE
Garage	V. COOKSEY
Millwrights	W. JOHNSON
Old Hall	E. BREENS
Stores	D. KIRKWOOD
Mixing	N. GREEN
Optical	MISS E. COTTON
Personnel	MISS M. BEE
Pyrometry	N. WALKER
Recreation Club	A. FARLEY
Silvering	T. PAGE
Stonemasons	H. ARMSTRONG
Transport	F. G. ANKORN
Typists' Pool	MISS S. SPENCER
Wages. Pensions	MRS. MOUNTFORD

#### BRANCH ESTABLISHMENTS

Glasgow	J. A. AITCHISON
London	J. W. CHANCE
Malvern	MISS D. CLARE
	P. ROBINSON
St. Helens	MRS. I. DAVIES

THE FESTIVAL OF BRITAIN	...	I
WOMEN'S PAGE	...	5
RECREATION CLUB NEWS	...	6
THE LABORATORY STAFF DINNER	...	8
BOUQUETS AND BRICKBATS	...	9
FROM YOUR COMMITTEE ROOM	...	10
1951 PANTOMIME	...	12
NEWS FROM ALL DEPARTMENTS	...	14
NEWS FROM BRANCH ESTABLISHMENTS	...	16
JOTTINGS	...	18
FLAT GLASS	...	20
PENDROUS AND CO.	...	21
MEET OUR VETERANS	...	22
FRIT AND CULLET	...	24
LAUGH WITH FARLEY	...	Inside Cover

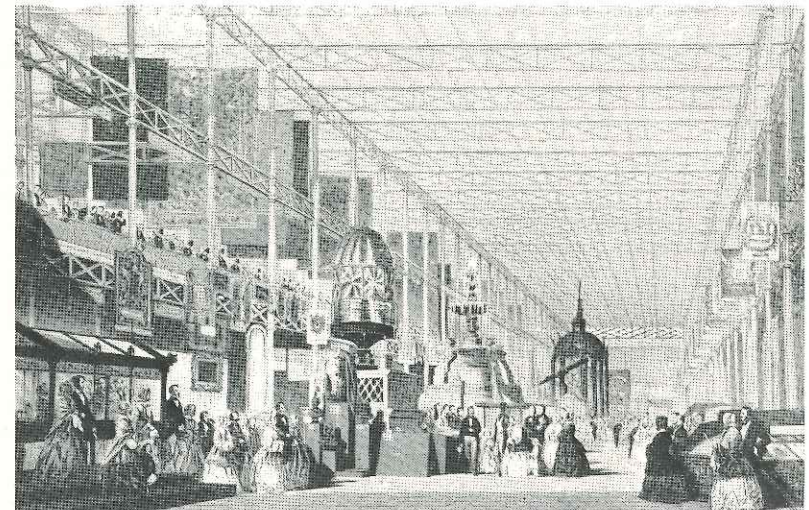
VOL. 4, No. 1

MARCH—APRIL 1951



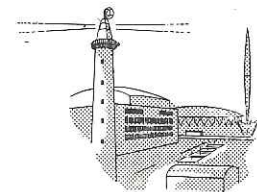
## THE FESTIVAL OF BRITAIN

By J. C. PERKINS



THE Crystal Palace. Thackeray must surely have been greatly impressed when he penned the lines above, and we at Chance Brothers ought to feel a sense of pride that our Firm was so vitally concerned in what was for its day a most imaginative enterprise and a great feat of constructional engineering. The risks involved were not to be taken lightly and when Robert Lucas Chance agreed to act as one of the underwriters of the venture, and to supply nearly a million feet of glass, he showed the spirit of adventure and courage which was characteristic of the age.

This year, to mark the centenary of the Great Exhibition, there is to be something as completely new in its conception as was the Exhibition of 1851. The Festival of Britain will be a nation-wide festival; an all embracing national gesture with the main exhibition



buildings in London. In its industrial and commercial aspects it will be sales promotion on a national scale. It is the purpose of this article to give readers some idea of what they may expect to see in London from May until September, and to indicate the part which will be played by Chance Brothers who will be exhibiting their products alongside others which have been selected for the high standard of the workmanship and design. (Readers will appreciate that it will be quite impossible to give an overall picture of activities in Great



Britain during the Festival period in an article which necessarily has space limitations.)

The focal point will be the South Bank site with the Shot Tower in the foreground on which will be mounted a Chance 3rd order lighthouse optic complete with pedestal, rotating mechanism, and lantern. The optic will have a beam intensity of 3,000,000 candles and will be operated by V.H.F. radio control from London Office. Above the optic will be the umbrella-shaped aerial of a radio telescope. This 30 ft. diameter aerial will be rotated from the "Outer Space" section of the Dome of Discovery and visitors to the Dome will be able to transmit radio signals to the moon, and observe their reflection back to the earth again after a few seconds.

Taking Hungerford Bridge as the dividing line, the exhibition plan makes use of this division by basing its layout on two roughly semi-circular sequences of buildings. The sequence lying upstream from the bridge will tell the story of the land of Britain and what the British have derived from it, the other, downstream, being concerned with the people themselves and their domestic surroundings.

#### Country. No. 6. UPSTREAM SEQUENCE

Displays showing the wild life of Britain.

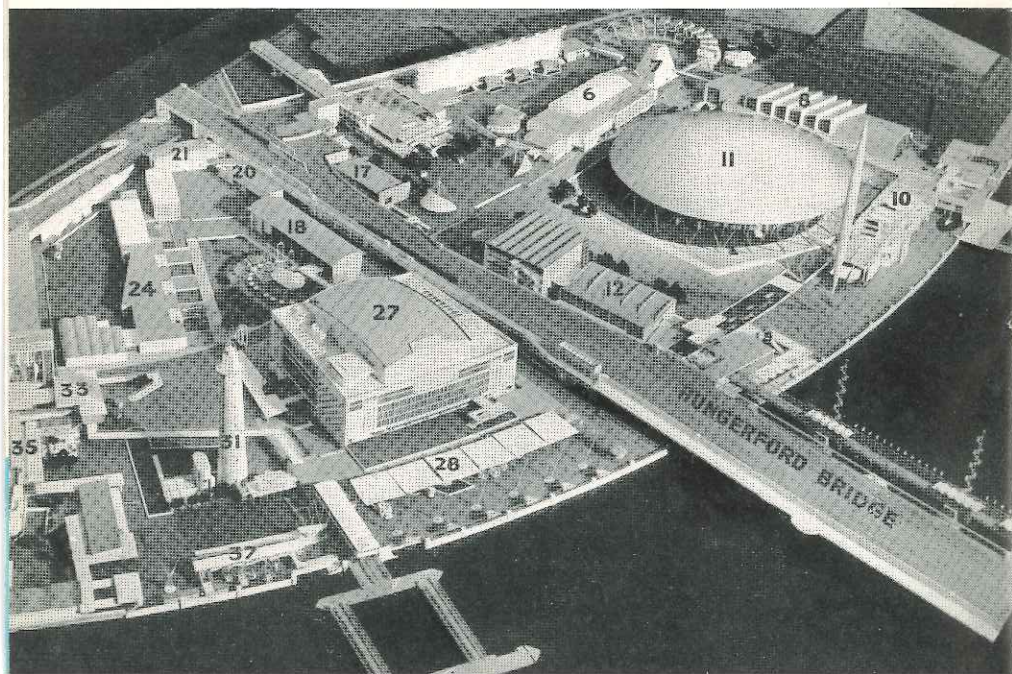
#### Natural Resources. No. 7.

The keynote will be the ever increasing uses to which these resources have been put.

#### Power and Production. No. 8.

This pavilion will take the story from the raw materials to finished products and will outline the wide scope and achievement of British Industries.

*The photograph below is of a large scale model of the South Bank Exhibition with the Shot Tower and Festival Hall in the foreground.*



#### CHANCE EXHIBITS:

*Illumination section.* 300 mm. Gas Buoy lens and lantern, working;  
Various lighting glasses.

*Hall of Production (Glass section).* Optical glass; part actual, part photographic.  
Domestic Glassware. Rolled plate patterns.

#### Sea and Ships. No. 10.

Here will be seen many aspects of our marine supremacy from shipyard to fisheries.

CHANCE EXHIBITS: 5th order optic (non working).  
Type "g" Diaphone (non working).  
Set of dioptric lenses.

#### Transport. No. 12.

On view here will be the best current British examples in all forms of transport and communications.

#### The Dome of Discovery Plan. No. 11.

The story to be told under this great aluminium dome will be of British pre-eminence in discovery and exploration, not only by land and sea but into the very nature of the living world and universe. Thus, ranged alongside the territorial discoveries of Cook and Livingstone will be displayed the scientific discoveries of Newton, Darwin, Faraday, Thompson and Rutherford. There will be a section devoted to nuclear energy, and also appropriate contemporary industrial exhibits.

#### CHANCE EXHIBITS:

*Sea Section.* Small working model of the Eddystone Lighthouse.

4th Order Portlight Beacon (working).

5th Order optic lens array.

Drawings of Eddystone Lighthouse 1884.

*Tropical Equipment.* All glass interchangeable syringe.

#### DOWNSTREAM SEQUENCE

#### The People of Britain. No. 17.

The theme will be the aptitude of the British people for living and working together and yet retaining their individuality. How our ancestors lived and what we owe to them will be vividly portrayed.

#### Character and Tradition. No. 18.

Illustrated here will be some of the characteristic ideas which together make up the British idea of life and will indicate the love of sport, home, nature and travel.

#### Homes and Gardens. No. 24.

Architects offer new ways of using small living space to the greatest advantage.

#### New Schools. No. 33.

This section will show the kind of buildings, furniture and equipment being designed for schools.

#### 1951 Design Review

A public display of 20,000 to 30,000 photos and samples of British products chosen on account of their high standard of design.

#### CHANCE EXHIBITS:—

Domestic glassware. Austinlite Rotary Switch. Laboratory glassware.  
Lighting glassware. Flamemaster Hand torch. All glass syringes.



**Health. No. 35.**

Outstanding British contributions in Nursing, Medicine, Surgery and Public Health will emphasize the theme of the importance of the individual to the community.

**Sport. No. 37.**

Here will be shown the wide range of sport and outdoor occupations which have been fostered by the British and exported to the world.

**Seaside. No. 28.**

One section will reflect the life and activities around Ports and Harbours, the other, holiday aspects of the seaside in all their traditional variety.

**Television and Production. No. 20.**

This pavilion will deal with the production of studio and outdoor television programmes.

**Telecinema. No. 21.**

A small theatre will demonstrate television projection.

**The Concert Hall. No. 27.**

This is the only permanent building on the site and will be a distinguished example of contemporary architecture. During the opening months important concerts will be given.

**Restaurants.**

Some 14 restaurants and cafes will be included in the Exhibition grounds and there will be a special milk bar for children.

In the "Regatta" restaurant the new Chance "Festival" figured rolled pattern will appear in the entrance vestibule and in screens elsewhere.

For lighter relief the Pleasure Gardens have been laid out at Battersea Park and they will be reached direct by river launches from the South Bank. Here will be a fun fair, children's zoo, open air cafe, dancing, illuminations and fireworks and last but not least a model railway designed by Emmett.

On the opposite side of the River, but within easy reach, there will be an exhibition of science at the Science Museum, South Kensington, and novel and exciting forms of presentation will be employed; not the least interesting will be an atom enlarged 10,000,000 times.

CHANCE EXHIBITS: *Lamp from Lighthouse Optic exhibited 1851.*

*About 600 square feet of the new "Festival" pattern will appear in the exhibition structure.*

At Poplar, in the East End of London, will be an exhibition of "live" architecture embodying the latest town planning notions and building techniques.

**Victoria and Albert Museum**

Manufacturers who exhibited in 1851 will show products which were displayed 100 years ago. Chance Brothers have agreed to lend various historical records including the letter written by the Prince Consort releasing the Firm from their obligations given in the underwriting of the 1851 exhibition.

It has not been easy to condense this article and at the same time endeavour to be fully informative. Interested readers who wish to learn more can obtain a booklet entitled "Notes for Industry on the 1951 Exhibition" from the Editor. It is free of cost and published by the Council of Industrial Design, to whom the writer wishes to express appreciation for the valuable information and assistance given.



## ~ Out in the open ~

A VAGABOND scarf that's enthralling to make and entrancing to wear. As it shouldn't cost you more than a few shillings and you'll be the owner of a headsquare of distinction, we know you'll want to set about making it right away, so apply to the Personnel Department for the free Penny Wise leaflet.



### PAVILION DATES FOR YOUR DIARY

Saturday, 31st March— Dance	2s. od.
Sunday, 1st April— Local Talent Competition	6d.
Monday, 2nd April— Old Tyme Dance	1s. 6d.
Saturday, 14th April— Dance	2s. od.
Sunday, 15th April— Smoking Concert	1s. od.
Monday, 16th April— Old Tyme Dance	1s. 6d.
Saturday, 28th April— Dance	2s. od.
Monday, 30th April— Old Tyme Dance	1s. 6d.

### CRICKET

The Cricket Section commences the 1951 season on 18th April with the hope that this year we shall achieve promotion to Division I after two seasons as runners-up. We expect to have all our stalwarts with us and any new members will be welcomed. If you are not a player we extend you an invitation to spend your Saturday and Sunday afternoons on the Recreation grounds and we promise you some pleasant cricket.

### BOWLING

The Bowling Green has had extensive treatment during the Autumn and it is hoped that it will be in tip-top condition for the coming season. The Bowling Section are hoping to again enter a local league and any interested players are asked to contact the Bowls Secretary (Jack Hartley) or the General Secretary.

### DANCES

Attendances at the Dances on alternate Saturdays in the Pavilion are increasing; this is no doubt due in no small measure to the lighting effects installed by Tommy Grice and Herbert Mills as well as to the popularity of Roy Graham and his Rhythmaires, who provide the music.

Old Tyme Dances on Mondays in the Pavilion are proving most successful and even a new beginner is assured of an enjoyable evening.

### CONCERTS

The popular Sunday Concerts have been maintained throughout the winter and the stalwarts who have weathered snow and fog have obviously found the

entertainment provided worth it. With the approach of the warmer weather the Pavilion Committee are hoping to find "House Full" notices necessary.

### NETBALL

This Section is again joining the Oldbury Netball League and would like to get two teams together for this next season. Anyone who is at all interested will be very welcome as we are looking forward to seeing more new members joining this section with a view to some very happy games together. Please contact Mrs. B. Crimes, Glassworks Buying Office.

### TABLE TENNIS

With only four matches left to play, both our teams are clinging to a one point lead in their respective divisions.

On the 13th February the Birmingham Ladies played the pick of the Smethwick League in our Pavilion. We had quite a number of spectators and irrespective of their knowledge of the game, seemed to enjoy the grand matches. Three of our own team were selected for this game and helped their team to win 6—3.

### VARIETY

Over 2,200 people saw and enjoyed the Variety Section's 1951 Pantomime in the Company's Little Theatre. Here is Cyril Harper's review of a wonderful show.

Norman Walker's pantomime, Aladdin, set a new high standard for Variety Section productions. All the ingredients of a good show were there, music, laughter, colour, and a little drama. The principal roles were again entrusted to the stalwarts of the Section, and so high was the standard that it was impossible to single out one from another because they formed a perfect team.

Andy Holland's arresting study of Abanazer was painted in grim and sombre colours, whilst Taffy Llewellyn as the Dame was again a complete pantomime in himself, with the faithful George Woodcock stooging as Wishy Washee. Stanley Hinde's version of the Emperor was a satisfying mixture of quaint dignity and regal splendour.

Arnold Heath, besides producing, showed as Minister Without Portfolio his mastery of the art of being funny when silent—his facial expressions speaking volumes. Norman Rhodes was an effective Genie while Les Purcell gave a brilliant performance as a Spiv and the sinister Lord of the Cave. Doreen Cooke gains added strength as Principal Boy with Marian Rock as a charming Princess. Margaret Bennett's witty performance showed her to be a valuable addition to the Section. To the Back Room Boys praise for efficient scene shifting, to Jack Allsopp for lighting, and deep appreciation to Vera Hickling for her excellent and original design in costumes.

The Variety Section have written another page in their history and have written it firm and clear.

### FESTIVAL OF BRITAIN

A week-end in London during the Festival of Britain is proposed. An offer has been received for the last three week-ends in August at a cost of £4 4s. od., including coach fare, hotel accommodation and meals for two days, a tour of the main Exhibition on the South Bank and a coach tour of London. Your Group Representatives or the General Secretary will give you any further details you require and weekly payments can be made if required. Book now to avoid disappointment.

### OUR FRONT COVER

*CONES to remove smoke and fumes from glass furnaces were characteristic of the industry for several centuries and many are still to be seen in the Stourbridge district. Here is a picture of the last cone at these works which was demolished recently. This particular one served the old Number 12 house.*



★

1



2



3

## SNAPSHOTS AT THE LABORATORY STAFF DINNER

★

- (1) Mr. John Raymond's table.  
(2) Dr. W. M. Hampton's table.  
(3) Study in expressions at  
Puzzle Corner.  
(4) The "Have a Go" Team.

4



# Bouquets & Brickbats



Congratulations and best wishes are extended to the following who have recently attained their majority: Ted Mills (Flat Glass Sales), Fred Turley and Tom Davies (Cost Office), Norman Bladon and Norman Birch (Drawing Office), Ralph Johnson and Derek Mynett (Sumo), Bernard Cumberlidge (Laboratory) and Harold Brown, Dick Robinson and David Payne (Lighthouse Electrical).



A number of our employees are engaged on work which involves the risk of foot injuries as a result of objects falling off benches, vehicles, etc. During the last twelve months six men sustained injuries of this nature and in each case the injury would have been avoided if the person concerned had taken the precaution to wear safety boots which can be purchased from the General Stores.



Members of the M. & C. Division, whose children attended the Children's party on 6th January, thank Chick Holloway and his helpers for their efforts and congratulate them on the success of the occasion. Everyone hopes that this was

only the first of many such functions.



To those Canteen customers who habitually leave their paper wrappings on the tables or throw them on the floor.

This kind of thing does make conditions grim for other Canteen users



To the members of the Works Consultative Committee who organised a collection in the works in aid of the Smethwick Branch of the Birmingham Mail Christmas Tree Fund. The sum of £15 12s. 6d. was raised for this worthy charity.



To the Foreman, who, on arriving at work, surveyed an apparently hopeless pile of process work awaiting completion and dropped the philosophical gem "anyone who enjoys working can certainly have a h—— of a good time in this Firm".



To the Cost Office for inventing a new pattern of figured glass, "SKIPPOTYPE". Presumably the Skippos typist meant "STIPPOLYTE".



# From your COMMITTEE ROOM

## WORKS CONSULTATIVE COMMITTEE

A meeting of the Works Consultative Committee was held on the 1st February. The Committee gave attention mainly to reports from its various Sub-Committees.

The Blown and Pressed Production Sub-Committee at their meeting had discussions in regard to the identification of glass requiring processing, transport facilities from Number 8 to the Pressed Process section and draughts in the Globe Process section. Reference was made to the mis-use of the lavatories in Number 8. The main Committee naturally expressed concern that there was no improvement in the condition of these lavatories and it was intimated that the Management might have to consider the possibility of closing them completely.

The Flat Glass Production Sub-Committee reported on its meetings of the Coloured and the Rolled Plate Sections. At a meeting of the Coloured Section the order and production position was reviewed. The Sub-Committee also discussed stocks, training of glass makers and fuel economy. At a meeting of the Rolled Plate Section it was reported that the volume of home orders for figured and wired glass continued to be below normal but it was anticipated that the position would improve in the near future. A discussion took place in regard to production, it being noted that all tanks were operating satisfactorily.

The Engineering Production Sub-Committee had had discussions in regard to the cleanliness of lavatories, fire appliances, Drawing Office services,

Grinding Room equipment, and Tool Room conditions.

Mention was made of the fact that the Malvern Branch had now taken over the assembly of all Rotary Switches and Flamemaster Torches.

The Optical Production Sub-Committee discussed a considerable number of domestic matters including annealing of colour filter melts and fuel economy. It was reported that the bulk of the fume extraction plant had been installed in the Moulding Shop and was proving satisfactory.

The Maintenance and Construction Sub-Committee had also considered a large number of domestic matters and these included delays in unloading heavy goods from lorries, repairs to the boiler shop roof, disposal of saw-dust and fuel economy.

The Canteen Advisory Sub-Committee reported that at their January meeting the quality of food, service and hygiene in all Canteens was discussed. This Sub-Committee was able to report that the issue of cups for use in the Canteen was proving satisfactory and that glassware was no longer being used for hot beverages. Reference was made to the need for additional facilities to deal with the increasing number of employees using the Canteens, particularly the Girls' Canteen.

At a meeting of the Fuel Economy Sub-Committee, the Chairman, Mr. W. E. Barrett explained the serious need for economy in the use of all types of fuel and a discussion took place in regard to a number of suggestions which were put forward. In considering the question of fuel economy, the Committee was disturbed to learn that no adequate arrangements appear to have been made for ensuring that lights in the Offices were switched off when not needed.

The Safety Committee reported on

two recent meetings at which the circumstances of 12 lost time accidents were reviewed. Four workpeople had to lose time in excess of three days as a result of minor injuries becoming septic and in each case the person concerned had not attended at the Medical Centre for treatment of the original injury. Three of the accidents were due to dropping objects, two to strains, one to an acid burn, one to slipping off a ladder and one to a cut arm which could have been avoided if the person concerned had been wearing the protective gloves which were provided.

The Chairman, Mr. John Raymond, reviewed the position in each of the Manufacturing Divisions and stated that the shortage of orders in the Flat Glass Division was disappointing but it is expected that it would be possible to keep all the tanks in operation. Experiments with the Flashed Drawn Plant will probably re-commence in April. Both the Optical and Engineering Divisions remain very busy. The Management of the Engineering Division, in particular, were concerned by the continual rising costs of materials and the fact that in many cases it was difficult for the Company to increase its prices to customers. In the Blown and Pressed Division output from the Domestic machines had improved remarkably. The installation of the tubing plant at Glasgow was proceeding according to plan and it is hoped to be in production during the summer.

## SUGGESTION SCHEME

The Suggestion Scheme Committee held meetings in January and February. The highest prize for the period went to J. Deeley of the Blown and Pressed Division who received £15 for recommending alterations to the water outlet arrangements on the boshes at Number 9. Another high award went to J. Stockin of the Millwrights who installed a relief valve on the Cathode Testing Tank which resulted in increased production. He received £12 10s. od. for his effort.

G. Farnsworth of the Stone Masons

recommended an improved method of facing Rolled Plate Sills and he was awarded £6 10s. od. B. Law of the Blown and Pressed Cathode Section received £3 15s. od. for a suggestion relating to the splitting and finishing of the Alfa-Laval cylinder. R. Hinson of the Electricians was awarded £2 7s. 6d. for suggestions which resulted in the prevention of falling temperatures in one of the Flat Glass processes. A suggestion for an indicator to be placed in the Optical Furnace Hall for use when the oil pumps fail resulted in B. C. Oddy of the Optical Department receiving £2 7s. 6d. G. H. Wallett of the Sumo Shop submitted an original suggestion for a tool for removing seized rotors from the stators.

There were 10 awards of 17s. 6d. each and these went to R. Hinson of the Electricians, J. Wheatley, Gas Plant, J. W. Neenan, Pressed Making, J. Whitehurst, Lighthouse Electrical, W. Withers, Coloured, W. Allmark, Rolled Plate, S. Morrall and S. Russell Blown and Pressed (two suggestions), I. Cotham (St. Helens) and S. Kelly (St. Helens).

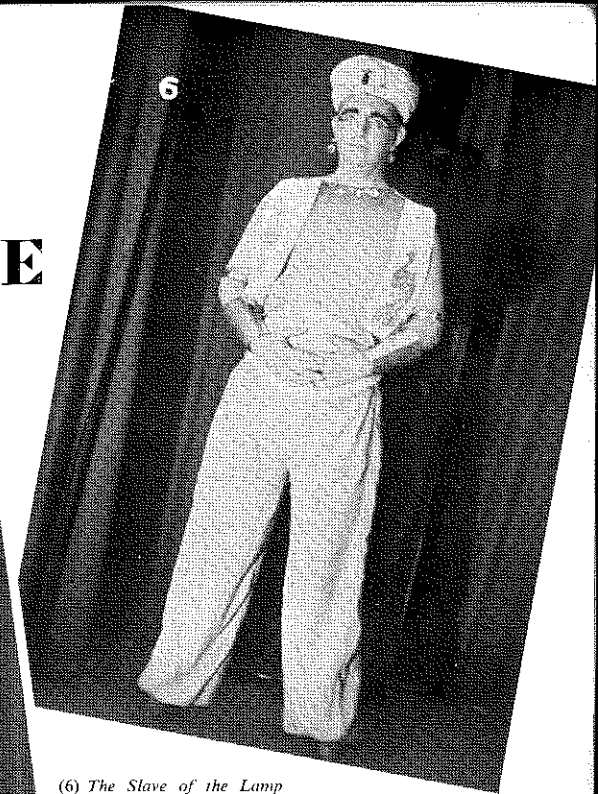
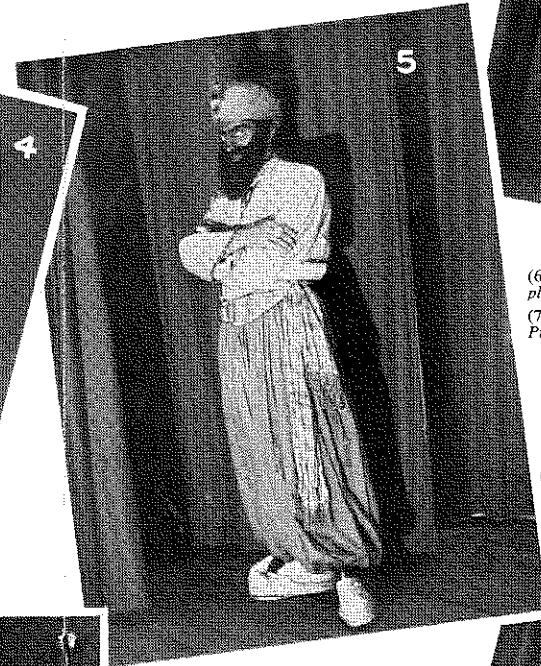
Other awards varied from 10/- to 5/- and were made to W. Ward, Blown and Pressed, H. Green, Millwrights, C. Daniels, Fitting Shop, R. E. Courtneil, Fitting Shop, A. Bowen, Stonemasons, T. Stockin, Millwrights, C. H. Pick, Blown and Pressed (previously in the Gate House) and E. R. Armfield, Optical.

The Committee would welcome suggestions from the employees at the Malvern Works and full particulars of the scheme can be obtained from Mr. Sharpe or Mr. Robinson.

All suggestors are reminded that they have the right to appeal against the decisions of the Committee and any such appeal should be addressed to the Committee Secretary, Mr. H. S. Martin.



# OUR 1951 PANTOMIME



(6) *The Slave of the Lamp* played by Norman Rhodes.  
(7) *Izzy-a-Swindler*—Les Purcell.



(1) George Woodcock as *Wishy Wash*, Margaret Bennett as *Nicee*, Stan Hind the *Emperor* and Arnold Heath, who as well as being the producer played as *Minister Without Portfolio*.  
(2) Marion Rock (*Princess Badrouledour*) and Doreen Cooke (*Aladdin*).  
(3) The book, songs and lyrics were by Norman Walker, seen here with the Barry Whitmore Girls.  
(4) Johnny Llewellyn as *Widow Twankee*.  
(5) Andy Holland as *Abanazer*.





# From all Departments

**MOSTLY PERSONAL**

## BLOWN AND PRESSED

The Blown and Pressed Sales Office congratulates Tom Andrews on his marriage on the 6th January to Betty Cole. A welcome is extended to Judith Hooper who recently joined the Sales Staff.

The Division Sales Office were very pleased to welcome Mr. and Mrs. John Raymond at their dinner and dance held at the Blue Gates Hotel on the 25th January. Jack Francis organised a most enjoyable evening and we were glad to have the Sales Representatives with us at this—the first—party we have held.

The Inspection Department extends sympathy to Ivy Malpass who lost her mother at the beginning of the year, and to Laurence Cammies who also lost his mother in January. The Globe Process Section extends sympathy to Mrs. Elizabeth Seddon on the death of her mother. Sincere congratulations and best wishes are extended to Mary Groves a Globe Splitter, who married William Allbutt, a Gatherer, on 17th February. Mrs. Catherine Evans left the Globe Process Shop in February. She is expecting a happy event.

## ENGINEERING

The Machine Shop welcomes back John Lomax and William Mayne after their prolonged illness. Bert Taylor who has been absent through sickness after many months continues to make steady progress towards recovery.

The Sumo Shop congratulates Eric Forsythe who was recently appointed a foreman of the Shop. Newcomers to the Shop include Clarence Knott,

Sydney Harris, Albert Bedson, Jesse Smith, Owen Barnes, and Elizabeth Norton. The Sumo Shop extends best wishes and congratulations to Les Hands who was married to Jean Bedford on 10th March.

The Sumo Sales Staff congratulates Esme Hadley on the announcement of her engagement, and Malcom McClaren who became the father of a son on the 15th February.

The Electrical Drawing Office welcomes Bob Ward. Bob was previously employed as an Apprentice until about four years ago when he left to join the Navy.

The Typing Pool welcomes Jean Fletcher who has recently joined the staff.

## FLAT GLASS

No. 4 Tank is scheduled for a cold repair in March when it will have completed a very satisfactory run. It is anticipated that it will be back in full production before the end of April. About the same time it is probable that No. 25 Furnace will be in operation, but that is somewhat dependent on the results of certain experiments now being carried out. The establishment of the Decorated Bentware process has unfortunately been slow, but sales have now begun to take place.

A party from the Rolled Plate Making and Warehouse had a very enjoyable evening on the 23rd January when they visited the Dudley Hippodrome Pantomime. The Division extends best wishes for a long and happy retirement to Bill Creed, who has retired at the age of 69 after 54 years' service with the firm.

The girls in the Seven Storey extend best wishes to June Whitehouse who was married on the 17th March. At the time of going to print Arthur Fardell from the Seven Storey is absent due to sickness and he is looking forward to a fortnight's convalescence in the South.

Jack Ashton left the works at the end of February after 24 years' service mainly as a Bender. Jack and his wife are now on the way to Australia, where they have decided to spend their future lives.

Congratulations are offered to James McLuckie who recently became a father.

## LABORATORY

The Laboratory staff was pleased to welcome Mr. and Mrs. John Raymond as principal guests at a party held on 31st January. The company, including the Pyrometry Department, guests and friends, partook of an excellent dinner in the Canteen, Mr. H. S. Martin presiding. After the loyal toast, Dr. Hampton, as head of the Laboratory, proposed the toast of the Company and Mr. Raymond replied.

A varied programme of entertainment was provided for the remainder of the evening, including Burtini, who gave an impressive display of magic, and the Laboratory "Ave a Go" team led by Mr. Barney Bull. This gave the opportunity for Miss Kath Ode to display her charms and Mr. Mike Rowe and Mr. Eddy Stone to describe their everyday activities and display their erudition. The appearance of these characters caused some surprise, as most of us were unaware that they existed within the precincts of the "back rooms" of the Laboratory.

A most enjoyable evening terminated with Auld Lang Syne and the wish was expressed that the party would become an annual event.

The Laboratory staff congratulates George Key on becoming the father of a daughter on 2nd January, and Alfred Harris who became the father of a daughter on 26th December.

At the end of February, Walter Zuber left Spon Lane to take up a position in our works at St. Helens and at the same

time Tom Whieldon returned from the St. Helens Works to Spon Lane.

## OFFICES

On 26th January members of the Sales Ledger Department said a fond farewell to Mrs. Nancy Pitt when she left the Company's employ to take up full time housekeeping. Nancy had been with the Company for 13 years.

Congratulations are offered to Barbara Mole of the Secretarial Department on her engagement to Ron Hanson. Barbara attained her majority on the 16th March.

The Typing Pool welcome as newcomers Doreen Bayliss, Eveline Farley and Jean Saxton. The Purchasing Department welcomes Alfred Mould, Tom Davies and Mrs. Margaret Morris who joined the Staff recently. The Stationery Office welcomes back Mrs. Lycett after many months of illness.

## PERSONNEL AND WELFARE

Our beloved friend, Sister Sadie McMahon left us at the end of February after 11 years' service. By the time this magazine is issued Sister will be in Australia where she is to take up a nursing post.

Joan Saxton, *nee* Beer, became the mother of a boy just before Christmas. Joan is still in Malaya but there is a possibility that she may visit England for a holiday this summer.

*Sister McMahon who has sailed to Australia.*





# News

## FROM OUR BRANCH ESTABLISHMENTS

### ● GLASGOW

The Rolled Plate Department is exporting glass in greater quantities.

Micro processing and the Spectacle Moulding departments continue, according to supplies available of Micro, and the orders received for Spectacle glass.

Henry Woods received a presentation from the staff to mark the occasion of his marriage to Miss May Shaw on the 26th January, together with best wishes for the future.

Congratulations are offered to Margaret Paton on her recent engagement.

The Welfare Section of Chances and Fibreglass held their Annual Dance on the 3rd February, in the Ca'doro, at which 220 members and friends attended, and enjoyed a most successful evening.

The Table Tennis Club is very popular and plan to enter additional teams next winter in the West of Scotland League.

The Badminton Club is top of the North West Glasgow Badminton League and have to meet the Shell-Mex Club on Friday, 23rd February.

We regret to have to record the death of our yard chargehand, Charles McGinley on the 24th January. He was well liked and respected.

### ● LONDON

Our Christmas celebrations consisted of a cocktail party which was attended by all members of London Office (except Kenneth Sutton-Jones who was abroad) and a few guests which included Mr. C. D. Notley and some of his colleagues. The unanimous feeling was that this was the best party we have had.

Our Press Officer, Miss Rosemary Garland, was married early this year. Our heartiest congratulations to her on becoming Mrs. R. Hughes. She continues to be known as Miss Garland in professional circles. Her friends here and at Spon Lane contributed to present her with a Sheffield Plate Georgian Toaster. As Assistant Press Officer and for general publicity work we now have Miss Anne Pollard, who joined us on 29th January.

Kenneth Sutton-Jones has just returned from his tour of the Middle East and Portugal. He was much impressed by the large amount of electrification of existing lights required by the Egyptian government, for which we are to quote. The Director of the Egyptian Lighthouse Service received part of his early training in our Lighthouse Works, a fact which no doubt accounts for the excellent treatment accorded to Kenneth.

### ● MALVERN

The Optical and Special Glass Branch at Malvern thank Mr. Norman Walker for his kind invitation to the excellent pantomime at Spon Lane, which was much enjoyed and appreciated by the workers and friends.

Congratulations are offered to Ann (late of the Optical) and Tom Edwards of the Engineering Works, on the birth of their baby daughter, also best wishes and congratulations to Freda Faghey and John Hill whose wedding took place last month.

### ● ST. HELENS

The engagement has been announced of Margaret Bebe (Cutting section) to

E. Graham (R.A.F. Middle East).

A welcome is extended to Mr. R. Bell who has been appointed Supervisor of the cutting section.

We hear that Mr. A. Black (Supervisor Remoulding Section) has been presented with the Police Special Constable Long Service Medal.

Our annual children's party has been arranged for Saturday, 24th February. Tea and a film show are part of the programme and we hope to report the highlights of the occasion in the next issue.

Mr. T. P. Whieldon is leaving St. Helens for the Optical Division at Spon Lane. His stay here has been a short, but we feel, a happy one, and we hope he will take with him pleasant memories of St. Helens.



*Weighing a piece of optical glass at the St. Helens Works.*





# Jottings *of shorter items and employees' contributions*

## HOLIDAY SNAPS

Many works magazines have an annual competition for the best holiday snapshots, and it is time that CHANCE COMMENTS introduced a similar feature. Most people take photographs of some kind or another whilst they are on holiday and in the September issue the centre pages will be reserved for the best snapshots received. Prizes will be awarded for any photograph published. Dr Bastick of the Laboratory has agreed to adjudicate. Prints should be sent to the Editor, c/o Personnel Department, not later than 20th August.

## GOOD HOUSEKEEPING WEEK

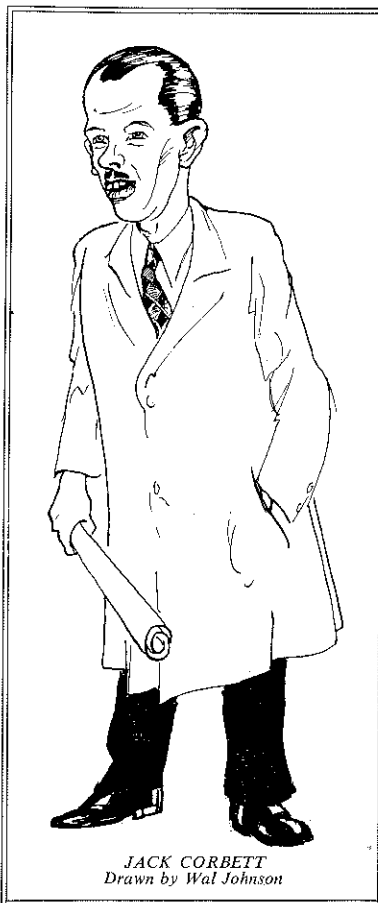
It is an accepted fact that tidiness and cleanliness in the workshop reduce the risk of accidents, as well as increasing production efficiency.

During the week 2nd April to the 7th the Royal Society for the Prevention of Accidents will organise a national campaign for the general cleaning up of works and on the recommendation of the Safety Committee, the Management has decided to participate in the scheme. Every employee will be urged to do his or her part towards ensuring that gangways are kept clear, benches are kept tidy, floors are brushed up. The campaign will serve the secondary purpose of a general "spring cleaning" of the works in preparation for the Festival of Britain.

## ROBOT TYPISTS

To Flapdoodle and what's the other name oh yes Flapdoodle and Cuttlefish you know the address Dear Sirs no not dear just Sirs they're dirty dogs we are in receipt of your letter of where is it oh here it is yes of the 1st instant put inst. not instant and in answer no not answer put reply in reply thereto we beg cross out beg we're not going to

beg blast em we have to state no not state to inform you that unless we receive cheque no not cheque it might bounce put payment of our account in



JACK CORBETT  
Drawn by Wal Johnson

## "Pendrous & Co."

FROM time immemorial a Pendrous has been associated with the building of Lighthouse Lanterns and Ventilators. The date when the first Albert Pendrous built the first Lighthouse Lantern has been lost in the mists of antiquity. In the fullness of time he was "translated" to a higher sphere of service, where, as far as we know, Lighthouse Lanterns are not required. The mantle of Elijah fell on Elisha; in other words, his son Albert the second, continued the good work of his father. He was small in stature, rather "tubby", he wore a "goatee" beard which made him look as if he was very familiar with the Parisian Boulevards, his spelling was awful, money to him was less than the dust. Pounds, shillings and pence were "meaningless symbols" for he was always in debt at the end of his various contracts, and the Firm always had to come to the rescue to save him from financial ruin.

Soon after his accession, he decided to consolidate the Gang, i.e., to make it an "All Pendrous" Gang, so he brought

his sons, cousins, sons-in-law, and all his male relations. When a young Pendrous was born he was immediately entered on the same lines as boys are entered for Eton. The Gang grew very powerful and Albert the second ruled with a rod of iron. No intruders were permitted in the Gang. One day the Foreman in a moment of rashness suggested to Albert that a small boy named Slim who had just left school should be attached to the Gang to help make tea and run errands. The storm then broke with fury. A "non-Pendrous" in the Gang! It was unthinkable and as one of Bernard Shaw's famous characters said, "Not — likely". If the Foreman had announced that the Bank of England had gone smash, the repercussions would have been nothing as compared to this, the herd instinct manifested itself. The foreman was informed in no uncertain manner what they thought. The boy Slim started work in the Lighthouse Shops but *not* with Pendrous & Co., and later became the Senior Foreman.

H. J. HIPKINS.

**JUNE 23rd**

**JUNE 23rd**

**JUNE 23rd**

*Book this Date!*

**GRAND FESTIVAL GARDEN PARTY**

ON THE

**RECREATION GROUND**

All the fun of the Fair and a chance to win a television set and many other valuable prizes. Further details will be announced later.



# MEET OUR VETERANS

## JOSEPH T. ASHLEY

**L**ONG before many of us were born Joe Ashley was making glass. Early in 1890 he started work in the Lighthouse Grinding Department. After serving about two years in that Department he went over to Rolled Plate Making where he worked for forty-three years before switching over to the Traffic Department where he has been engaged for the last sixteen years.

It isn't hard to imagine that Joe has many reminiscences of his youthful days on the works and these he recalls with a chuckle and sometimes a grimace. As a lad, his job was to knock men up at all hours of the morning, and he still remembers vividly the many epithets and threats that came through the windows of roused irate slumberers called by mistake—mistakes very often deliberately made.

He believes he is the only surviving worker who was engaged at Number 1 Tank when this started in 1892. He has done every job in the Rolled Plate Department except Ladling—he was not tall enough for this.

Many waters have run under the bridges since Joe started on the works, but we wish him well and hope to see him around for a long time yet.

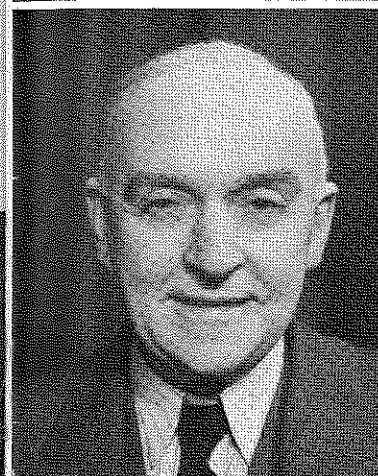
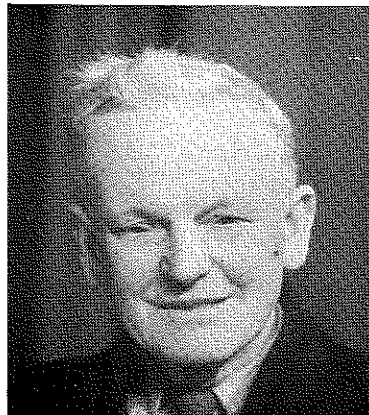
## WILLIAM HICKS

**F**IFTY-NINE years is Billy's record of service with the firm to date, and he does not by any means consider this to be near the sum total because like Johnny Walker he is still going strong.

He started work in the Rolled Plate Department when 13 years of age as a "Door Minder". This was to open and shut the doors of the glass-house when crates, etc., were coming in or going out. In these days this was necessary to prevent draught from interfering with the temperatures. His wages were 5s. per week and he was on this job for two years. Then came promotion, a job "Laying On" or pulling sheets from the crates and placing on a board. Gradually moving from one job to another he became a "Squarer". On this job he had to cut sheet glass to sizes for men on piece work and recalls just how hard he had to go at it. If any one had to wait for the Squarer there was a rare old shindy.

Eventually he moved to the Extra White Warehouse as a Squarer and then to the Rolled Plate Warehouse, first as Assistant Cutter, and then Cutter. He is still a Cutter in the Rolled Plate and it is interesting to see how deftly he can use a diamond.

He has always been fond of football and actually played for Chances the season they beat Salters in the final for the West Bromwich Charity Cup. We share Billy's optimism for the future, he has still a lot of glass to cut.



## WILLIAM HILL

**O**N the fourth day of March, 1898, Bill Hill started work in the Coloured Department. He had been working for nearly a year previous to this at Allan and Everitts, Smethwick, as a "Dogger Up". He didn't like the job much so he decided to come to Chance Brothers. That was 53 years ago.

He started off "Carrying Pieces". This was to carry the blown cylinders from the Making to the Splitting Room. In process of time he became a Gatherer and for 16 years continued on this work. He then went to the Carpenters as a Labourer for 18 months and from there to the Millwrights where he is still employed.

If Bill were 20 years younger he would like to go back to glassmaking, yet he is quite happy where he is.

Fourteen years ago he suffered a grievous loss when his only daughter was killed in a motor cycle accident, and eighteen months ago he lost his wife, so that he is now very much on his own. He has always followed cricket and football and keenly supports the Albion.

Bill has always been a plodder and never had a tremendous lot to say. We congratulate him on completing 53 years' service and wish him many more years of activity.

## ALBERT EDGAR FREWIN

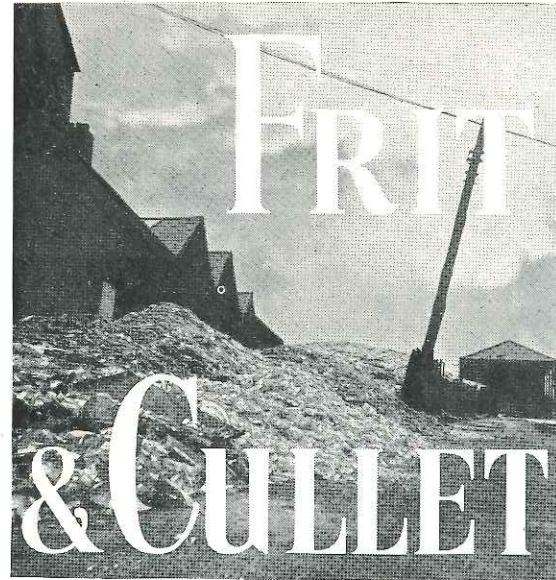
**I**N the July, 1949, issue of the Magazine we met Bert in our "Meet Your Supervisor" series. Here we must meet him again for fifty-two years have gone since he started his innings. He confesses that during this half-century he has had many a "sticky wicket", but he is still batting, and will go on batting until completely "stumped".

He started when 13 years of age in the Gatehouse, then situated near the Old Hall. When 14 years of age he was offered one of two jobs, the General Office or the Carpenter's Shop—he chose the Carpenters. He has the distinction of starting in a Department as an apprentice and rising to the position of Senior Foreman. During his young days he studied hard at the Technical School to take special courses in Building Construction, at the same time receiving practical instruction in the trade under Mr. Sam Field.

He saw service with the Royal Engineers during the first world war, returned to his job and was made Chargehand in 1924. In 1930 he was promoted to Foreman, and in the same year he was appointed General Foreman of Carpenters, Plumbers, Painters and Saw Mill. He was promoted to Senior Foreman in 1937.

Since Bert started there has been much change in his Department. Modern machinery has been installed and both the Box Shop and Saw Mill have been brought up-to-date. The present shortage of timber gives him more worry than anything he can think of but we just can't visualise Bert being completely "stumped" and we wish him the very best of luck and a long continuance at the "wicket".





## DO YOU KNOW?

1. Exactly what would you be coming through if you were "Coming thro' the Rye"?
2. Which is correct: the yolk of an egg is white; are white?
3. Whose daughter was "My daughter Clementine"?
4. What was the name of Henry VIII's eighth wife?
5. What would a footless stocking be without a leg?
6. Two business competitors had the same records.

A. Turnover £2,880 in 12 weeks' working 48 hours per week.

B. Turnover £3,120 in 15 weeks' working 52 hours per week.

Which is the more prosperous business, and how do they compare with one another in turnover for equal periods of time?

## SO WHAT?

Stonehenge was built a little after 2,000 B.C. . . . it was used for religious ceremonies. Columbus did not discover America . . . America had been reached by Europeans five hundred years before. The earth has three different motions . . . its motion on its own axis completed

in a day, its motion round the sun completed in a year, and its motion, shared with the rest of the solar system, towards a point not far from the star Vega at a speed of about  $12\frac{1}{2}$  miles a second. Under English law at the present time a man can be sentenced to death for high treason, piracy with violence, desertion when on active service, mutiny, and sleeping or being drunk on sentry duty.

## HEARD THIS ONE?

Woman (testifying in Traffic Court)—"I was driving along High Street with my husband at the wheel . . ."

"I changed my mind on the way down" said a woman rescued after suicide jump from Tower Bridge.

This advertisement appeared in a small town newspaper in New York State. "I, having just cause and provocation, have left Arthur Ash's board, but not his bed, as that was mine and I took it with me."

An American University conducted a survey on why women go to college. One wrote "I came to college to be went with, but I ain't . . ."

Angel No. 1: "How did you get here?"

Angel No. 2: "'Flu'".

## ANSWERS

1. The River Rye.
2. The yolk is yellow.
3. A miner, forty miner.
4. He had only six wives.
5. Nothing.
6. A is the more prosperous. The proportion is 5 to 4.

## LAUGH WITH FARLEY

